



**Model
HS761-00**

Sunnex low voltage halogen spot lights are available in 20W, 35W, 50W and 75W of intensity. These lights feature a swivel joint with 360° axial rotation and 90° angular adjustment. While all spot lights are low voltage, an integrated transformer can be provided by special request on certain models.

HS Series

This safe, low voltage 20W spot light is designed for direct connection. It is ideal for production, inspection, medical and research applications. A remote transformer is also available.

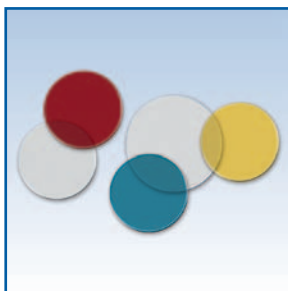
Features:

- Safe 12V or 24V-20W halogen bulb
- Square, rectangular or panel sub base
- Rocker switch on base
- Optional dimmer (HS761 only)
- Clear lens is standard - frosted, blue, red or UV lens optional



**Model
HS762-00**

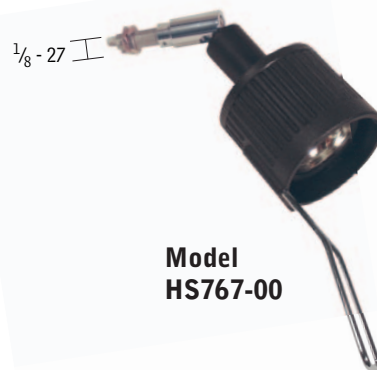
HS Series Accessories



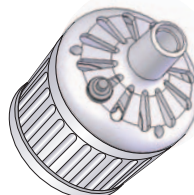
Lenses/Filters include clear, frosted and red lenses; UV and blue filters.



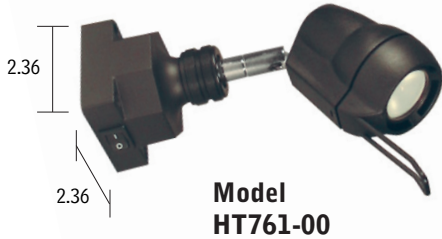
Bulbs supplied are 12V/20W halogen. Optional 12V/20W Dichroic Lamps dissipate 60% of heat through back of lamp thus reducing the amount of heat projected forward.



**Model
HS767-00**



Switch on Head (-HS) For convenient on/off control, a push button switch can be mounted on the back of the lamphead.



**Model
HT761-00**

HT Series

This compact model is a safe, low voltage 20W spot light designed for direct connection. It is ideal for inspection and medical applications. A remote transformer is available.

Features:

- Safe 12V or 24V 20W halogen bulb
- Square sub base
- Rocker switch on base
- Optional dimmer
- Frosted lens standard – clear lens optional



Switch on Head

(-HS) For convenient on/off control, a push button switch can be mounted on the back of the lamphead.

HM Series

This safe, low voltage 35W spot light is designed for direct connection. Just right for medical, research, and inspection applications. A remote transformer is also available.

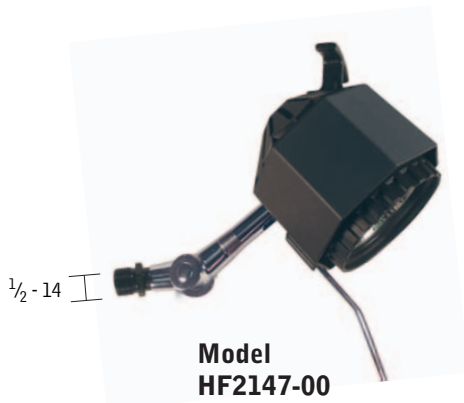
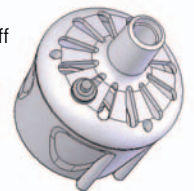
Features:

- Safe 12V or 24V-20W halogen bulb
- Square, rectangular or panel sub base
- Rocker switch on base
- Optional dimmer (HM1141 only)
- Frosted lens is standard – clear lens optional



**Model
HM1141-00**

Switch on Head (-HS) For convenient on/off control, a push button switch can be mounted on the back of the lamphead.



**Model
HF2147-00**

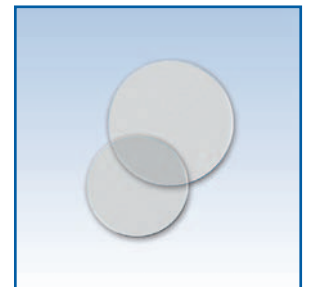
HF Series

A safe, low voltage 50W/75W spot light designed for direct connection. Perfect for production equipment, assembly workstations, and other machinery. A remote transformer is available.

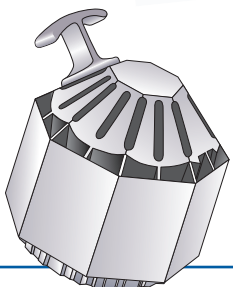
Features:

- Safe 12V or 24V-20W halogen bulb
- Square or panel sub base
- Rocker switch on base
- Optional dimmer (HF2141 only)
- Clear lens is standard – frosted lens optional

HT, HM & HF Lenses



Lenses/Filters includes clear or frosted lenses.



Ventilation Vented casing allows heat to dissipate through the back of the lamphead.